

Transcendence School of The Healing Arts

ISSUE
#01

Welcome to the course catalog
for Transcendence School of the
Healing Arts.

We are inspired by
our students drive
& their willingness
to start a new
career path.

Policies



ACADEMIC
CALENDER
2026

Table of Contents

Welcome	3	Appeal	21
Discrimination Policy	3	Reinstatement	21
Mission Statement	4	Cancellation and Refund Policy:	21
Curriculum Goals	5	Textbook Refunds:	22
Ability to Plan and Organize an Effective Massage & Bodywork Session	5	Refund Policy:	22
Ability to Perform Massage Therapy and Bodywork for Therapeutic Benefit	6	Student Complaint Procedure	22
Ability to Develop a Strategy for a Successful Practice, Business, or Employment Situation	6	General Class Schedule & Start Dates	23
Ability to Develop Successful and Ethical Therapeutic Relationships with Clients	7	Course Requirements	23
Academic Calendar	7	Policies and Procedures for Students	24
Program Admission Requirements and Procedures: 11	8	Student Resources	24
Transcendence Massage Therapy Program	8	Massage Practice for Students	25
Required Texts	8	In-Class Massage Practice	25
Course Description	9	Physical Boundaries	26
Anatomy and Physiology	9	Non-Academic Policies and Procedures	26
Alternative Modalities (Adaptive Massage)		Standards and Objectives of Professional Conduct	26
Pathology		from OAR	29
Kinesiology/Biomechanics	12	Additional Qualifications	30
Complementary Bodywork Systems	12	Academic Standards	30
Professional Ethics & Business Practices	13	Grading:	30
Accountability	13	Grade Scale:	30
Health, Hygiene and Communication	13	Quizzes:	30
Massage Therapy Technique	13	Homework / Oral Presentation:	30
Facility Directory	13	Midterm Exams:	31
Financial Information	13	Final Exams:	31
Registration Period:	14	Satisfactory Academic Progress Policy	31
Contact Information to Register:	14	Attendance:	31
Program Admission Requirements and Procedures:	14	Tardiness, Absences, and Make-up Work	31
Denial of Admissions	15	Make-Up Policies:	32
Student Health Requirements:	16	Tardiness, Absences, and Make-up Work	32
Admission	17	Verbal and Written Warning System for	
Application Process for Licensure :	17	Misbehavior in Massage Schools Students in	
Required Supporting Documentation	17	Oregon	33
Initial Licensing Fees	17	Probation	33
Electronic Fingerprinting	17	Discrimination Policy	34
Placement Assistance Services	17	Technical Standards	35
Student Conduct & Dismissal	17	Progress Reports	35
Dress Code & Personal Hygiene Policy	18	Satisfactory Academic Progress Policy	36
Course Transfer	18	Right to Challenge	36
Policies and Procedures	19	Effects of Incompletes, Remedial Courses and	
	19	Course Repetition.	36
	20	Student Records/Academic Transcripts	37
	20	Certification Upon Graduation	38
	20	Student Additional Supplies & Expenses	38
	20	Transcendence School of the Healing Arts	
	20	Affiliations	38

Welcome to the course catalog for Transcendence School of the Healing Arts

Transcendence School of the Healing Arts prohibits discrimination against its customers, employees, and applicants for employment and student applications on the basis of race, color, national origin, age, disability, sex, gender identity, religion, reprisal, political beliefs, marital status, familial or parental status, sexual orientation, or if all or part of an individual's income is derived from any public assistance program, or protected genetic information in employment or in any program or activity conducted or funded by Transcendence School of the Healing Arts.



At Transcendence, we are dedicated to the healing arts. Our mission is to inspire and teach the next generation of healers to come. Our goal is to provide a dynamic course that will educate the next generation of healers. To help them succeed, our dynamic approach focuses on creating a deeper connection between the mind and body. Our belief is that once the mind and body are connected our limits are transcended and true healing can begin.

We have designed a course to ensure every massage therapist understands a certain body of knowledge and possesses a specific skill set to be a competent practitioner. At Transcendence, we've defined this knowledge and skill set as the

“Transcendence Massage Course Curriculum”

Curriculum Goals

Our curriculum goal for students is to ensure that all Transcendence School of the Healing Arts students understand standards of professional knowledge and abilities.

Our goal for our school is to emphasize student learning outcomes so that every student who graduates from Transcendence School of the Healing Arts has the knowledge needed to work within the State of Oregon.

A massage therapy program's primary educational/vocational objective is to equip students with the knowledge and skills necessary to practice massage therapy as a licensed professional. This includes both theoretical knowledge and hands-on training in various massage techniques, anatomy, and physiology, as well as business and ethical practices. The program also aims to prepare students for the Massage and Bodywork Licensing Exam (MBLEX).

Here's a more detailed breakdown:

1. Developing practical skills:
 - A. Massage therapy programs focus on hands-on practice, allowing students to learn and refine massage techniques under supervision.
 - B. Students learn to assess and tailor massage treatments to individual client needs and preferences.
 - C. They gain experience in creating a safe, comfortable, and therapeutic environment for clients.
2. Building theoretical knowledge:
 - A. Students learn about anatomy, physiology, kinesiology, and other related sciences to understand the human body's systems and how they are affected by massage.
 - B. They learn about the benefits of massage and when it is contraindicated.
 - C. They gain knowledge of the prevention and spread of disease and maintain a sanitary work environment.
3. Preparing for licensing and certification:
 - A. Many programs are designed to help students pass the mblex, which is required for licensure in most states.
 - B. Some programs may also prepare students for board certification, such as the one offered by the national certification board of therapeutic massage and bodywork (ncbtmb).
 - C. They may also provide career counseling and business practice skills.
4. Fostering professionalism and ethics:
 - A. Massage therapy programs emphasize ethical practices and professional standards.
 - B. Students learn about boundaries, confidentiality, and maintaining a professional demeanor.
 - C. They may also be trained in business practices, such as marketing, scheduling, and billing
 - D. When you graduate from our massage therapy program, you should have the following competencies:

Ability to Plan and Organize an Effective Massage & Bodywork Session

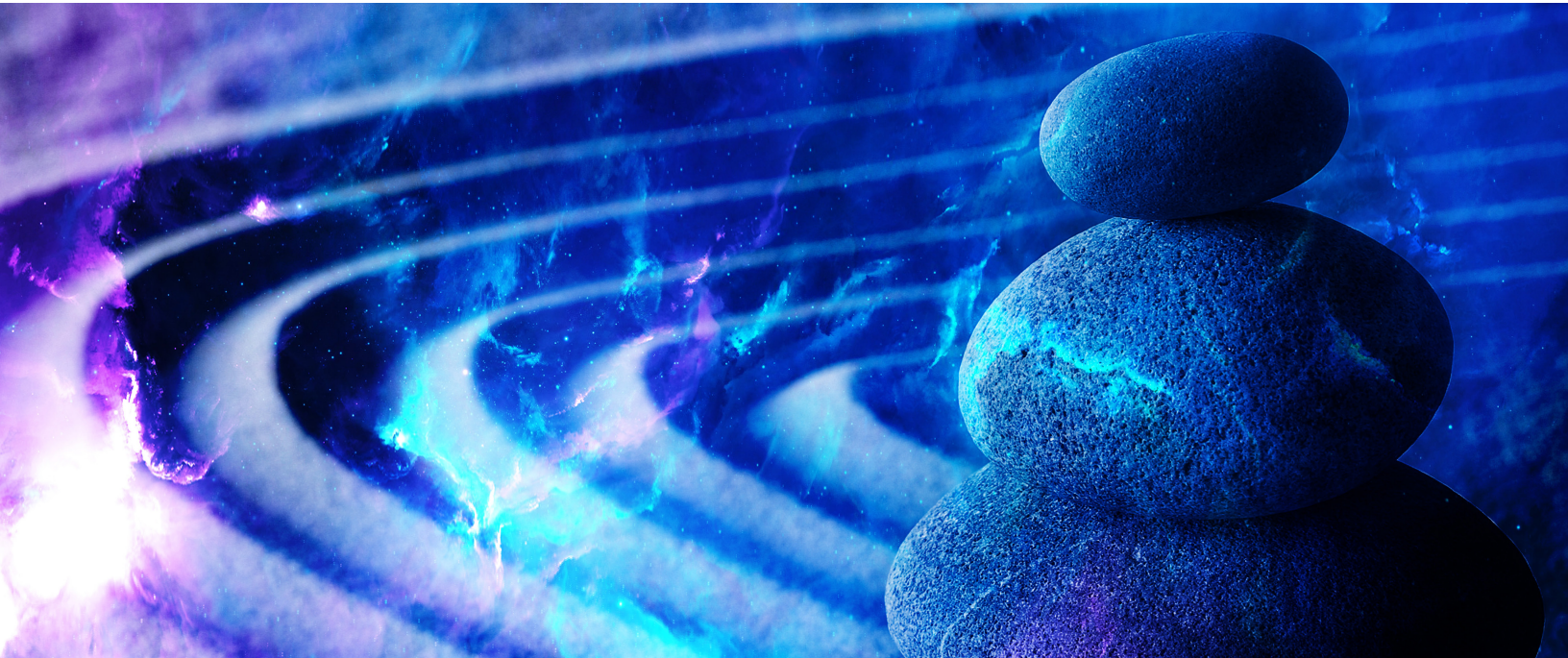
You will learn in this section:

- ☉anatomy and physiology for the whole body
- ☉the most common health conditions that need to be considered when planning a session
- ☉common healthcare terminology
- ☉Utilization of the most important information to gather from a client regarding their health history
- ☉determining what techniques are safe to use with clients
- ☉determining which techniques might need to be adjusted to meet their specific needs.
- ☉how massage therapy and bodywork might impact the client physiologically and emotionally during the session
- ☉how massage therapy and bodywork might impact the client physiologically and emotionally after the session
- ☉guide clients in getting the most positive effects from their session
- ☉how massage therapy fits in with other activities and treatments for the client's wellness.

Ability to Perform Massage Therapy and Bodywork for Therapeutic Benefit

In addition to understanding all the theoretical information about how massage and bodywork can affect the client, you will also learn different hands-on techniques to develop your skill in performing therapeutic touch. The important distinction in this competency is that we make sure our school is assessing your ability to do the techniques, not to answer written questions about them. This could be assessed through partnering with classmates, or it could be through working with members of the public in a professional clinic setting. Whatever the setting, you will need to know how to use the equipment and products common in the practice of massage and bodywork, such as a padded table and oils and lotions. Some massage therapists use hot and cold items to influence the client's level of tension; since not everyone will use such items after graduating, we simply make sure that our school teaches about how those items could affect the client's body.

Remember, this competency does not ensure that you will learn all the different styles of massage and bodywork – there are too many for that! Our school has the flexibility to decide which techniques we will teach you, and we ensure that our teaching includes an assessment of your ability to perform the techniques yourself.



Ability to Develop and Implement a Self-Care Strategy

Whether you prefer yoga or a good talk with a friend, making time for yourself is important for the longevity of your career in a helping profession like massage.

This portion is intended to ensure that our school is teaching our students about how to manage stress in healthy ways, and to plan ahead to create a lifestyle that balances work with the types of activities that will support you in making this a career that lasts.

Ability to Develop a Strategy for a Successful Practice, Business, or Employment Situation

Right after graduation, you might want to work for someone else to build your experience and see as many clients as possible. Or perhaps you want to go into business for yourself! Either way, we want to make sure our school has prepared you for the most common career pathways for massage professionals, so we use this portion to check that aspect of the curriculum. Remember, we want this career to last, so we want you to know a little bit about how to be either an employee or an entrepreneur, and to build a successful practice with loyal clients in either case.

Ability to Develop Successful and Ethical Therapeutic Relationships with Clients

From understanding cultural differences to practicing professional boundaries such as timeliness and dressing professionally, you will learn about important ways that your own behavior can influence your relationships with your clients.

Ability to Identify Strategies for Professional Development

You will need to learn about the ways to keep up to date with the latest information available, as well as how to maintain any licenses you need to practice, which might require that you take refresher courses every few years. We want to make sure you have tools for your future career, so we ask your school to teach you more than just what you need to know for your first year.

Becoming a massage therapist may only take a few months, but the profession changes every year as new research comes out.

Transcendence School of the Healing Arts will be closed for the following holidays:

- ☯ New Year's Day
- ☯ Memorial Day
- ☯ Independence Day
- ☯ Labor Day
- ☯ Thanksgiving Day
- ☯ Christmas

Academic Calendar

School Term: January 5th, 2026
to July 24th, 2026
Monday thru Friday
10 am to 2 pm

700hr/4 days a week
144 days
217 calendar days or 31 weeks.

January.	20
Febuary.	20
March.	22
April.	22
May.	20
June.	22
July.	18

Registration begins December 18th and ends January 4, 2026



Pre-Term Dates

Monday November 3rd 2025- Registration opens

Thursday December 18th 2026- Last day to Register

First Term: Monday January 5th 2026 to Tuesday April 14th 2026.

January 5th- First day of School.

January 23rd- Last day of Health, Hygiene and Sanitation. First day of Kinesiology

March 4th- Last day of Kinesiology

March 15th- First day of Pathology

April 14th- Midterm Exams. Last day of first Term. Last day of Pathology

<u>Courses.</u>	<u>Start & End days for Class.</u>	<u>Times Each Class Meets</u>
Health, Hygiene and Sanitation.	1-5-26 to 1-23-26.	10 am to 11:44 am
Kinesiology.	1-23-26 to 3-4-26.	10 am to 11:44 am
Pathology	3-5-26 to 4-14-26	10 am to 11:44 am
Anatomy and Physiology	1-5-26 to 4-14-26.	11:45 am to 12:38 pm
Massage Techniques.	1-5-26 to 4-14-26	12:38 pm to 2 pm

Second Term: Wednesday April 15th 2026 to Friday July 24th 2026

April 15th- First day of Second Term. First day of Ethics

May 5th- Last day of Ethics. First day of Business

May 25- Holiday, Memorial Day. No school this day.

May 26th- Last day of Business

May 27th- First day of Complementary Bodywork Systems. Internship starts.

June 16th- Last day of Complementary Bodywork Systems and First day of Alternative Mod.

July 24th- Final Exam. Last day of Classes

<u>Courses.</u>	<u>Start & End days for Class</u>	<u>Times Each Class Meets</u>
Ethics	4-15-26 to 5-5-26	10 am to 11:44 am
Business	5-5-26 to 5-26-26	10 am to 11:44 am
Complementary Bodywork Systems	5-27-26 to 6-16-26	10 am to 11:44 am
Alternative Modalities	6-16-26 to 7-24-26	10 am to 11:44 am
Anatomy and Physiology	4-15-26 to 7-24-26	11:45 am to 12:38 pm
Massage Techniques	4-15-26 to 7-24-26	12:38 to 2 pm

Program Admission Requirements and Procedures:

- ☯ Applicants must be 18 years of age.
- ☯ Applicants must submit a completed application form and \$100 registration fee (these should be submitted no less than 10 days before classes begin).
- ☯ Applicants must submit a copy of his/her high school diploma or G.E.D certificate.
- ☯ Applicants must be physically, mentally, emotionally and financially capable of completing the course.
- ☯ Applicants must submit a copy of a current photo ID.
- ☯ Applicants must submit completed essay questions about your interest in the massage therapy field including your experience and any other relevant information.
- ☯ Applicants must go through a screening process if they have a criminal record
- ☯ Applicants with a criminal background may be denied admission. For charges that may result in a denial please refer to: <https://www.oregon.gov/odhs/background-checks/Documents/pdq-criminal-tier-3.pdf>.

Transcendence Massage Therapy Program

Departmental
Courses

Anatomy and Physiology	125 Hours
Alternative Modalities (Adaptive Massage)	50 Hours
Pathology.	50 Hours
Kinesiology/Biomechanics.	50 Hours
Complementary Bodywork Systems	25 Hours
Professional Ethics & Business Practices.	50 Hours
Health, Hygiene and Communication.	25 Hours
Massage Therapy Technique.	200 Hours
In Person Hours:	575
Clinic Hours:	125
Course Hours:	700

Required Texts

Textbooks are included in tuition. The following texts are required to study at Transcendence

School of the Healing Arts:

- Trail Guide to the Body 6th Edition. ISBN #: 978-0-9987850-6-6.
- Trail Guide to the Body Workbook ISBN #: 978-0-9914666-7-2.
- Mosby's Fundamentals of Therapeutic Massage 7th edition ISBN: 9780323661836.
- Mosby's Essential Sciences for Therapeutic Massage 6th Edition ISBN: 9780323733069.
- The Art of BloodBending ASIN:B08993YSMY
- Anatomy Trains ISBN: 9780702078.

Course Description

Anatomy and Physiology

Anatomy and physiology is the study of the body's systems/structures and how they interact. Anatomy focuses on the physical arrangement of parts in the body, while physiology studies the inner functioning of cells, Tissues, and organs.

Alternative Modalities (Adaptive Massage)

Adaptive massage is a massage technique that therapists may use to accommodate clients with physical, emotional, or health-related challenges. This could include clients who are geriatric, pediatric, hearing impaired, vision impaired, or chronically ill. Adaptive massage may involve adapting the massage technique or client positioning to prevent positional strain and meet the client's needs.

Pathology

Pathology is the study of the causes and effects of disease or injury, and it's important for massage therapists to understand it. Pathology helps massage therapists understand the body, related issues, and how different ailments can cause symptoms and reactions. It's also important to know about any precautions or contraindications related to a particular pathology, and how it relates to the massage itself.

Kinesiology/Biomechanics

Kinesiology and biomechanics can both be incorporated into massage therapy to improve client results. Kinesiology can help massage therapists understand the body's anatomy and physiology, including the interactions between forces and the nervous system. Biomechanics can help massage therapists apply theories to real-life examples and view things differently.

Complementary Bodywork Systems

Complementary Bodywork Systems are a range of techniques, often including massage, that are used alongside conventional medical care to address physical and emotional well-being. These systems often combine manual therapies with other practices like breathing exercises, movement, and meditation to promote holistic healing.

These therapies include but are not limited to Hydrotherapy, Hot and Cold Stones, Aromatherapy, Implements, Kinesiology Tape, Lymphatic drainage, Trigger Point, Ayurveda, Reflexology, and Reiki.

Professional Ethics & Business Practices

Professional ethics and business practices are sets of moral principles and values that guide how people and organizations behave in a business environment. In massage therapy, ethical practices include:

- 🕒 Confidentiality - Massage therapists should keep client information confidential unless there is a legal or ethical obligation to disclose it. This helps build trust between the therapist and the client.
- 🕒 Draping - Therapists should use draping techniques to protect the client's physical and emotional privacy.
- 🕒 Scope of practice - Therapists should be knowledgeable of their scope of practice and only practice within those limitations.
- 🕒 Referrals - Therapists should refer clients to other professionals when it is in the client's and therapist's best interest.

Other ethical principles that professionals can apply in their work include:

- ☉Honesty - Professionals should be honest, truthful, and transparent in their actions and communication.
- ☉Integrity - Professionals should consistently do the right thing and avoid conflicts of interest and dishonest practices.

Accountability - Professionals should hold themselves and others responsible for their actions and ensure that others follow ethical guidelines.

Health, Hygiene and Communication

Health and hygiene are practices that promote good health and a clean environment. Health refers to a person's overall well-being, including their physical, social, and mental health. Hygiene refers to the behaviors and procedures that people do to maintain their health, such as cleanliness and proper disposal of waste. Good hygiene practices can help prevent diseases and strengthen the immune system.

Communication is the process of exchanging information or ideas using words, sounds, signs, or behaviors. In massage therapy, communication is a vital tool that helps therapists and clients build rapport and understand each other's needs and expectations. It can also help ensure the client's comfort and safety.

Massage Therapy Technique

Massage therapy is a holistic healing technique that involves applying pressure, tension, and movement to the body's soft tissues, such as muscles, tendons, and connective tissues. Massage therapists use different techniques to promote relaxation, reduce muscle tightness, and relieve pain. Some common massage therapy techniques include:

- ☉Effleurage - A French word that means "to touch lightly on." This technique involves gliding the hands over the body with gentle pressure, often using open palms or thumbs to warm up the client and apply lubricant. Effleurage can be used at the beginning or end of a massage, or as a transition between other techniques. It can help reduce stress, anxiety, and depression, and may also improve circulation and reduce pain.
- ☉Swedish massage - A popular technique that often involves rubbing, kneading, stroking, and tapping muscles. Swedish massage may also include long, smooth strokes, circular movements, vibration, percussion, and passive joint movement.
- ☉Petrisage - A French word that means "to knead." This technique involves applying deep pressure to muscles using kneading, wringing, skin rolling, and pick-up-and-squeeze movements.
- ☉Friction - Deep, circular movements that cause layers of tissue to rub against each other, which can increase blood flow and break down scar tissue.
- ☉Tapotement - A rapid, percussive tapping, slapping, and cupping technique that can strengthen deep-tissue muscles and increase blood circulation. Tapotement is often used to warm up athletes before an event.
- ☉Myofascial release - A therapy technique that focuses on releasing stiffness in the fascia, the connective tissue system that surrounds muscles. Massage therapists use light pressure to massage and stretch tense areas. Myofascial release therapy may help with conditions such as myofascial pain syndrome, headaches, and venous insufficiency.

Facility Directory

All Classes are taught by:

Jeserae Baisch LMT Director/Instructor

He can be contacted by phone, email, or mail at:

971-263-7134

transcendence35@gmail.com

7273 NE Nelly St Hillsboro Oregon 97124

Other Important contact information

Oregon Board of Massage Therapy (OMBT)

610 Hawthorne Ave SE, STE 220, Salem, OR 97301

Phone:503-365-8657

Fax:503-385-4465

Email: OBMT Info * OBMT <obmt.info@obmt.oregon.gov>

The Oregon Board of Higher Education, now called the Higher Education Coordinating Commission (HECC), can be reached at

3225 25th Street SE, Salem, OR 97302

email: info.hecc@hecc.oregon.gov.

Financial Information

Total Tuition for our 700-hour course costs 14,100\$.

1. A payment of \$100 is due at the time of signing the enrollment agreement.
2. BALANCE OF TUITION OPTIONS: 14,000\$
 - A. \$14,000 due no later than three (3) weeks prior to class, payable by cash, check or credit card. (2.6% processing fee for credit card payments.)
 - B. Down payment of \$7,000 due three (3) weeks prior to class, with the balance to be paid in one (1) installment in the amount of \$7,000 by week ten (10) of the Massage Therapy Program. (2.6% processing fee for credit card payments.)
 - C. Payment plans can be broken down into 6 payments. One payment for each month that the course covers. Each month's payment is 2,334\$. Payments are due the first of each month, if payment is not received by the 10th of the month then the student will have to pause their classes until the payment is received. If the student pays for the class in full and drops out part of the way through, the unused portion will be returned to the student. Monthly payment plans are non-refundable. (2.6% processing fee for credit card payments.)
3. The Date of Enrollment is defined as the date on which the Student signs this Enrollment Agreement and pays the registration fee.
4. THESE OPTIONS ARE AVAILABLE TO ALL STUDENTS
5. Students can be denied entry to Transcendence School of the Healing Arts if financial requirements are not met.
6. Scholarships and Financial aid is not available at this time.
7. We offer no fee waiver at this time.

Admission

Registration Period:

Registration begins on November 3rd 2025. And ends December 18th 2025 Steps to register: Contact Transcendence School of the Healing Arts via our website, email, phone or mail and we will send you an application to register with the school. The applicant will be notified via email within 5 business days.

Contact Information to Register:

Jeserae Baisch LMT Director/Instructor/Owner
971-263-7134

transcendence35@gmail.com

7273 NE Nelly St Hillsboro, Oregon 97124

www.eyeofillumination.com/transcendenceschoolofthehealingarts

Steps to register:

Contact Transcendence School of the Healing Arts via our website, email, phone or mail and we will send you an application to register with the school. The applicant will be notified via email within 5 business days.

Program Admission Requirements and Procedures:

The applicant will need to do the following:

- ☉ Applicants must be 18 years of age.
- ☉ Applicants must submit a completed application form and \$100 registration fee (these should be submitted no less than 10 days before classes begin).
- ☉ Applicants must submit a copy of his/her high school diploma or G.E.D certificate.
- ☉ Applicants must be physically, mentally, emotionally and financially capable of completing the course.
- ☉ Applicants must submit a copy of a current photo ID.
- ☉ Applicants must submit completed essay questions about your interest in the massage therapy field including your experience and any other relevant information.
- ☉ Applicants with a criminal background may be denied admission. For charges that may result in a denial please refer to: <https://www.oregon.gov/odhs/background-checks/Documents/pdq-criminal-tier-3.pdf>

Denial of Admissions

Transcendence School of the Healing Arts reserves the right to deny admission to any person for the following reasons:

- ☉ The applicant does not meet the standard requirements
- ☉ The applicant is unable to perform or receive massage due to physical, mental, or emotional reasons
- ☉ The applicant is unable to meet financial commitments
- ☉ An applicant that is denied may reapply if the issue that they were denied for is addressed and fixed.

Student Health Requirements:

In order to maintain a safe environment that students may both receive and administer a massage, students must maintain their own health and be free of contagious and infectious disease. All students must sign a Release of Information form as required by HIPPA.

If a student's health status should change at any time during the course of the program, the student shall notify the director of massage therapy in writing immediately. After consulting with the students' physician, a determination will be made whether the student will be able to participate in class. If it is determined that further participation in classes or clinic by the student would result in endangerment to the student or others, the student will not be able to complete the program, and a refund will be made of any prepaid tuition in accordance with Transcendence School of the Healing Arts refund policy.

Application Process for Licensure :

To qualify specifically to become a Licensed Massage Therapist in the State of Oregon, an applicant must:

Meet education requirements listed below, and Pass the Oregon Jurisprudence (law) exam, and have passed a Board approved written National Examination. (MBLEX, NCBTMB, CESI). *NOTE: ALL NATIONAL EXAM RESULTS MUST COME DIRECTLY FROM THE EXAM PROVIDER.

The Board requires 625 hours/25 quarter credits/15.74 semester credits of education from an accredited or Department of Education approved school with the following:

The 625 hours/25 quarter credits/15.74 semester credits of education must include:

- ☉ A minimum of 200 hours/8 quarter credits/ 5.34 semester credits of health sciences, consisting of Anatomy and Physiology, Pathology, and Kinesiology;
- ☉ A minimum of 300 hours/12 quarter credits/8 semester credits of Massage Theory and Practical Application, Clinical Practice, Business Development, Sanitation, Communication, and Ethics.
- ☉ The remaining 125 hours/5 quarter credits /2.4 semester credits required may be in any of the above subject areas

The applicant will need to do the following:

1. Complete and submit an online registration request and required payment (if not already completed).
2. Applicants will receive an email notification with log-in information to complete the online application.
3. The Board will review the online submittal, supporting documentation, and fees as outlined in the Application for Licensure.
4. The applicant will receive an email with a link and log-in information to complete the online Jurisprudence Examination.
5. The applicant will then complete the electronic fingerprinting process to initiate their background check.
6. Upon successful completion of steps 1-5 of the online application process and have submitted all required documentation, passing of the Jurisprudence Exam and background check,
7. The applicant will be given a link to pay for the initial license
8. Once the board receives the initial license payment, the applicant will be issued a license.

Required Supporting Documentation

- ☉ Official transcripts in a sealed envelope
- ☉ 2" X 2" color photograph (passport-sized) taken within the last 12 months
- ☉ A copy of a valid government-issued picture ID (such as, a driver's license, passport etc.)
- ☉ A list of three references that do not reside with you, yet can be relatives
- ☉ A copy of a current Basic Life Support (BLS) certification
- ☉ Results from a National Written Examination (MBLEX, NCBTMB, CESI). *NOTE: ALL NATIONAL EXAM RESULTS MUST COME DIRECTLY FROM THE EXAM PROVIDER.

Initial Licensing Fees

Application Fee:	\$100.00
Fingerprint Processing Fee:	\$47.25
Initial License Fee*:	\$100.00-\$200.00

*The Initial License Fee is based upon renewal date, which is based upon applicant birth month/year. Individuals born in odd numbered years will renew every odd numbered year, regardless of when their initial license was issued. Those born during an even year will renew every even year. Additionally, licensees must renew before the first day of their birth month. If an applicant's first renewal is less than 12 months from time of issuance, the Initial License Fee is \$100.00. If the applicant's first renewal is more than 12 months from date of issuance, the Initial License Fee is \$200.00.

Electronic Fingerprinting

The board requires that all new candidates provide fingerprints for a national criminal background check prior to issuance of a license. Additionally, the state of Oregon requires electronic Fingerprinting, in lieu of fingerprint cards. There is a \$47.25 Fingerprint Processing Fee payable to OBMT that will be required before the background check will be initiated. Please see the instructions below to schedule an appointment.

Note: There will be a \$12.50 fee accessed by Fieldprint for the process of obtaining your fingerprints.

To Schedule an appointment for electronic fingerprinting, please follow the instructions below:

- ① Visit www.FieldprintOregon.com (YOU WILL NEED TO ENTER THIS FIELDPRINT CODE: FPORMassTherapistsDAS)
- ② Click on the "Schedule an Appointment" button.
- ③ Enter an email address under "New Users/Sign Up" and click the "Sign Up" button. Follow the instructions for creating a Password and Security Question and then click "Sign Up and Continue".
- ④ Enter the contact and demographic information required by the FBI and schedule a fingerprint appointment at the location of your choosing.
- ⑤ At the end of the process, print the Confirmation Page. Take the Confirmation Page with you to your fingerprint appointment, along with two forms of identification.

If you have any questions or problems, you may contact their customer service team at 877-614-4364 or customerservice@fieldprint.com

Policies and Procedures

Placement Assistance Services

For students enrolled in the program, placement assistance begins at the approximate calendar midpoint of the enrollment period. Students will receive counseling and assistance in securing employment and moving into new positions as they move along their career paths. Relocation or travel may be required to obtain employment. While this service is available to all students, Transcendence School of the Healing Arts cannot guarantee employment to any student.

Student Conduct & Dismissal

A diploma from Transcendence School of the Healing Arts is an endorsement to represent the profession of massage therapy. This diploma reflects the student's ability to proficiently serve the community and to represent themselves ethically and professionally at all times. Therefore, Transcendence School of the Healing Arts reserves the right to evaluate and make recommendations to aid the student in achieving an appropriate professional manner. Students are expected to conduct themselves with fellow students, staff, and the public in a manner befitting a health professional. If instructors, administrators, staff, students, or clients express concern about a student's professional, ethical, and interpersonal abilities, the student will be asked to meet with the Director of Transcendence School of the Healing Arts. The student may face possible probation, suspension, or removal based on any of the following reasons:

- ☉ Poor academic performance or academic failure
- ☉ Inappropriate or disorderly conduct or insubordination
- ☉ Violation of any terms during the enrollment period
- ☉ Academic cheating or dishonesty
- ☉ Any behavior that the Director of Transcendence School of the Healing Arts believes to be inconsistent with the standards of the school as described in Policies and Procedures for Students.

Dress Code & Personal Hygiene Policy

Students are expected to arrive to class dressed in clean, professional, comfortable attire. Nails should be clean and neatly trimmed in order to practice massage. Hair that is longer than shoulder length shall be tied back during massage class and clinic. Clothing should be neat and clean as described in Policies and Procedures for Students.

Course Transfer

If a student currently has a certificate from another licensed school of massage therapy (minimum 100 clock hours) and would like to continue their hours at Transcendence School of the Healing Arts, they must meet the following requirements:

- ☉ General requirements for admission
- ☉ Take a written and practical exam with a score of 75% or higher
- ☉ Certification within the past five (5) years of start date
- ☉ Admittance to the program will be done on an individual basis with the approval of the Director of Transcendence School of the Healing Arts
- ☉ Tuition will be adjusted accordingly for the student.

Transcendence School of the Healing Arts gives credit for previous studies where applicable. Students must provide transcripts and show documents as proof of training from an accredited school which is approved by the Oregon State Board of Massage Therapist. Transferring students should be prepared to demonstrate their skills in practical evaluation. The fees for the evaluation session is \$100/hour. When we evaluate the prospective transfer, we will determine, based upon our criteria, how many hours/credits we are willing to discount. This is determined based upon:

- ☉ level transfer student has demonstrated proficiency of the required skills of that section
- ☉ proof of their training
- ☉ they have been to a school approved by the Oregon State Board of Massage Therapists.

NOTE: There is no guarantee that Transcendence School of the Healing Arts credits/hours will transfer to another school.

Appeal

Students have the right to appeal dismissal decisions made by the school administration by submitting a written request to the Director of Transcendence School of the Healing Arts describing any mitigating circumstances or conditions that warrant special consideration. If the appeal is accepted, the student may be reinstated according to special terms and conditions stipulated by the Director. Transcendence School of the Healing Arts will respond within 30 days of request to appeal.

Reinstatement

If an appeal is denied or if the student chooses not to appeal the decision, an application for reinstatement may be submitted to the school no later than 30 days from the date of termination. Students who do not pursue or win an appeal may be reinstated under special conditions.

Cancellation and Refund Policy:

Cancellation or Termination by School or Student Full Refund of Tuition and Fees: Transcendence School of the Healing Arts policy refunds follow the OAR 715-045-0036 Cancellation and Refund Policy: Resident Instruction. We do not offer distance learning or self-directed education.

715-045-0036

Cancellation and Refund Policy: Resident Instruction

(1) A student may cancel enrollment by giving written notice to the school. Unless the school has discontinued the program of instruction, the student is financially obligated to the school according to the following:

(a) If cancellation occurs within five business days of the date of enrollment, and before the commencement of classes, all monies specific to the enrollment agreement shall be refunded;

(b) If cancellation occurs after five business days of the date of enrollment, and before the commencement of classes, the school may retain only the published registration fee. Such fee shall not exceed 15 percent of the tuition cost, or \$150, whichever is less;

(c) If withdrawal or termination occurs after the commencement of classes and before completion of 50 percent of the contracted instruction program, the student shall be charged according to the published class schedule. The student shall be entitled to a pro rata refund of the tuition when the amount paid exceeds the charges owed to the school. In addition to the pro rated tuition, the school may retain the registration fee, book and supply fees, and other legitimate charges owed by the student;

(d) If withdrawal or termination occurs after completion of 50 percent or more of the program, the student shall be obligated for the tuition charged for the entire program and shall not be entitled to any refund;

(e) The enrollment agreement shall be signed and dated by both the student and the authorized school official. For cancellation of the enrollment agreement referenced in subsections (1)(a) and (b) of this rule, the "date of enrollment" will be the date that the enrollment agreement is signed by both the student and the school official, whichever is later.

(2) Published Class Schedule (for the purpose of calculating tuition charges) means the period of time between the commencement of classes and the student's last date of attendance as offered by the school and scheduled by the student.

(3) The term "Pro rata Refund" means a refund of tuition that has been paid for a portion of the program beyond the last recorded date of attendance.

(4) When a program is measured in clock hours, the portion of the program for which the student will be charged is determined by dividing the total clock hours into the number of clock hours accrued according to the published class schedule as of the last date of attendance.

(5) When a program is measured in credit hours, the portion of the program for which the student will be charged is determined by dividing the total number of weeks into the number of weeks accrued according to the published class schedule as of the last date of attendance.

(6) For other measurements of time such as days or weeks, the portion of the enrollment period for which the student will be charged is determined by dividing the total number of days or weeks into the number of days or weeks, accrued according to the published class schedule as of the last date of attendance.

(7) The term “tuition cost” means the charges for instruction including any lab fees. “Tuition cost” does not include application fees, registration fees, or other identified program fees and costs. The school shall adopt and publish policies regarding the return of resalable books and supplies and/or the prorating of user fees, other than lab fees.

(8) The school shall not charge a withdrawal fee of more than \$25.

(9) The school may adopt and apply refund calculations more favorable to the student than those described under this policy.

(10) When a cancellation, withdrawal, termination, or completion occurs, a calculation of all allowable charges under this rule shall be made. If such calculations evidence that the school received total payments greater than its allowable charges:

(a) Within 40 days after notification of such cancellation, withdrawal, termination, or completion, a written statement showing allowable charges and total payments received shall be delivered to the student by the school, together with a refund equal in amount to monies paid to the school in excess of those allowable charges;

(b) In the event payments to a student account are derived from federal and/or state tuition assistance program(s), including student loan programs, regulations governing refund notification and awarding within respective program(s) shall prevail in lieu of paragraph (a) of this subsection, but only with respect to the covered portions thereof; and

(c) In the event payments to a student account are derived from a sponsoring public agency, private agency, or any source other than the student, the statement of charges and payments received together with an appropriate refund described under paragraph (a) of this subsection may be delivered instead to such party(ies) in interest, but only with respect to the covered portions thereof.

(11) In case of disabling illness or accident, death in the immediate family, or other circumstances beyond the control of the student that causes the student to leave school, the school shall arrange a prorated tuition settlement that is reasonable and fair to both parties.

(12) A school shall be considered in default of the enrollment agreement when a course or program is discontinued or canceled or the school closes prior to

completion of contracted services. When a school is in default, student tuition may be refunded by the school on a pro rata basis. The pro rata refund shall be allowed only if the Superintendent determines that the school has made provision for students enrolled at the time of default to complete a comparable program at another institution. The provision for program completion shall be at no additional cost to the student in excess of the original contract with the defaulting school. If the school does not make such provision, a refund of all tuition and fees shall be made by the school to the students

Textbook Refunds:

All textbooks required for a program will be distributed to the student on his/her first day of attendance. Refunds will not be available for textbooks once they have been distributed. In the event that course materials substitutions are made within a student’s planned enrollment period, students will be provided with the new materials at no additional charge.

Refund Policy:

All refunds due will be made to the original funding source(s) within 30 calendar days of the determined withdrawal, cancellation or termination date from the course or program. The procedure / policy, for collecting accounts receivables (unpaid fees) after 90 days is: Phone call – Letter – Dismissal – Legal action.

Student Complaint Procedure

Most problems or complaints that students may have with the school, staff, or administration can be resolved through a personal meeting with the heads of the school.

Any questions or concerns regarding information contained within the Enrollment Agreement

must be directed to the heads of the school, in writing to: Jeserae Baisch via email to jeseraebaisch@gmail.com or call directly to 971-263-7134. If a student’s questions or concerns are not resolved to the student’s satisfaction, then the student may bring the situation to the attention of the Oregon Board of Higher Education.

General Class Schedule & Start Dates

At this time, There is only one program schedule offered at Transcendence School of the Healing Arts:

1. No full-time classes offered at this time.
2. Part-Time, Day classes 10am to 2pm Monday thru Friday, 5 days a week. Complete program in 7 months.

Transcendence School of Healing Arts reserves the right to cancel or postpone the start of any class due to unforeseen circumstances. If a class should be postponed or canceled for any reason, students can either choose to apply the fees already paid to the start of the next class or receive a full refund.

Course Requirements

Transcendence School of the Healing Arts Certificate in Massage Therapy admission requirements include:

- High school diploma or a General Educational Development diploma (GED)*
- Cumulative grade point average (GPA) of 2.0 or better
- Pass a criminal background check – Persons who have been convicted of a misdemeanor of a violent or sexual nature or any felony will be prohibited from professional healthcare practice in many jurisdictions. Northwestern Health Sciences University will deny admission to applicants with such convictions. The University, therefore, reserves the right to conduct a criminal background check on all applicants or on any enrolled student, at any time, in the program.
- Meet all additional qualifications, listed below
- Complete an admission application

Policies and Procedures for Students

COMMUNICATION We want you to get the information you need on time. Outlined below are some of the systems we have in place to make sure this happens.

Address and Contact Information Please be sure to update your address and other contact information whenever it changes. We use this information to mail grades, and invoices and to contact you when necessary. Updates can be given to either admin.

Contacting Faculty and Staff All faculty and staff have emails and phone numbers that can be used to contact them. Jeserae Baisch @ jeseraebaisch@gmail.com 971-263-7134.

Class Cancellation If an instructor must miss a class because of illness or other emergency, the class may be canceled or a substitute teacher may be appointed. In case of a cancellation, all efforts will be made to contact students and let them know. A sign will also be posted at the entrance to the school.

Inclement Weather in cases of inclement weather, classes may be canceled. As soon as it is decided, a message will go out to all students. Students are also encouraged to call ahead and check.

Memos General communication comes in the form of memos to all students. These are sent via mail unless students have signed up for paperless communication. Those students will be sent a memo via email.

Paperless Communication Transcendence prefers to communicate electronically whenever possible. Students are allowed to sign up for paperless communication at orientation and can enroll in or cancel paperless communication at any time by contacting any admin.

STUDENT RESOURCES

Outlined below are various student resources in and around the campus.

- ☉ **Wi-Fi Computer Access** Internet access is available to all students while on school grounds.
- ☉ **Kitchen.** The Student Kitchen contains a sink, refrigerator, microwave oven, and tables and chairs. There is cold filtered water and ice in the refrigerator. The kitchen does not contain utensils or dishes, so students should plan to bring necessary items from home. When using the student kitchen, please clean up after yourself, place food waste in the compost bin, all trash in the trash bins, and sort recycling according to the posted signs.
- ☉ **Linens and Massage Lubricants** In class, all Linens and massage lubricants are provided. Students may not use their linens for classes or practice sessions. Students who use the massage practice room are required to check out linens and lubricants from the admin. Students who wish to use their massage lubricants must use only unscented products. Students are required to bring in an ingredient list with them to show their practice partner and must ask their practice partner if they are willing to use this alternate lubricant.
- ☉ **Lounge** The Student Lounge is next to the kitchen. It's furnished with a bean bag and chairs. This is a good place to visit with classmates, study, or eat meals.
- ☉ **Lost and Found** We maintain a Lost and Found in the lounge. Please check there for missing items, and bring found items there for storage.

Massage Practice for Students

- ☉ **Massage Practice Forms:** A set of massage practice forms is distributed in each massage course. These forms are also available on Google Drive. Contact the admin office for access. Students may also copy these forms as needed at the printer or retail copy centers.
- ☉ **Massage Practice Room:** We provide a massage practice room for students on a space-available basis. There may be times when the practice room is not available due to classes or administrative issues. Please check with the admin for availability and to sign up to use this space. Only Transcendence students may use the massage practice rooms, and only for practice with other Transcendence students.
- ☉ **Parking:** We offer limited parking in the driveway, all other students must park along the road.
- ☉ **Personal Property:** The school and surrounding area are generally safe, however, there are occasional instances of property theft or damage. Students are encouraged to take standard safety precautions with their items: don't leave valuables unattended; lock your bike or car; don't leave bags, packages, or items in sight in your car. We cannot accept responsibility for lost, damaged, or stolen items.
- ☉ **Public Transportation** Transcendence School of the Healing Arts is located 1.3 miles from the MAX light rail system. Information about routes and schedules is available from www.trimet.org or Google Maps.
- ☉ **Smoking and Tobacco Use** Transcendence is a tobacco-free campus. Smoking and the use of smokeless tobacco products are not permitted on or around the school grounds. Additionally, the use of e-cigarettes is not permitted on or around the school. This includes the steps and sidewalk area.
 1. Getting Ready
 - A. Wash hands with soap and warm water
 - B. Get linen out for your massage. Grab one set at a time.
 - C. Lubricant. Located in the massage room utility cabinet.
 - D. Disinfectant- It must be used before each massage to disinfect the massage table, face cradle, bolster, and the oil or lotion bottle. Located in the massage room utility cabinet.
 2. Setting Up the Table
 - A. Clean table face cradle, bolster, and the oil or lotion bottle.
 - B. Put clean sheets on the massage table.
 3. Table Safety
 1. Be aware of where the client is at all times.
 2. Make sure not to knock the table over.
 3. Be sure to make sure all draping is secure.
- ☉ **Potentially dangerous situations.** Avoid any situations that could cause harm to yourself or your client. This includes (but is not limited to) lifting heavy objects, moving the table by dragging it along the floor (get someone else's help and lift the table from each end), standing on chairs or anything else other than the floor, etc. When in doubt, get help rather than perform an activity that could put yourself or your client in danger!
- ☉ **Performing the practice session.** Perform the massage/bodywork session as instructed by your teacher. Remember to observe all hygiene regulations, including wearing shoes. Bare feet are not allowed.
- ☉ **After the practice session.** When you have completed the in-class session, put the used linens in the covered laundry container. If the table will not be used again during the class, you are required to return the station to its normal appearance; spray the table, face cradle, and bolster with the disinfectant and wipe them dry; clean oil bottles and place linens in the proper place.
- ☉ **SCREENING AND DOCUMENTATION**

Students are required to complete intake interviews, screen their practice partners for any possible contraindications or modifications to massage, and complete documentation of their practice session (including wellness forms, intake forms, SOAP notes, evaluation forms, and journals). This applies to all out-of-class massage assignments, Student Clinic massages, or any other massage or bodywork sessions undertaken as part of any massage course assignment. Samples of all forms are included with Course Materials. Instructions for completing forms are reviewed in all hands-on classes.
- ☉ **COMMUNICABLE DISEASE CONTROL**

To help prevent the spread of infectious or communicable diseases, Transcendence follows the recommendations for infectious disease control in the information sheet entitled "Communicable Disease Guidelines for Massage Practitioners" published by the Oregon Board of Massage Therapy. Under these guidelines, students with the following conditions may not perform massage on school grounds or during out-of-class assignments.

 - ☉ **Respiratory Infections** If a student is displaying symptoms of an upper respiratory infection (fever, coughing, sneezing, green or yellow nasal discharge), s/he is not allowed to perform massage on campus or for assignment until the symptoms are controlled.
 - ☉ **AVOIDING ALLERGENS** It is against policy for students or instructors to use substances in the building that may cause allergic reactions in other students. This includes but is not limited to oils and lotions with strong fragrances. Students should note that the Spa Massage course includes the use of aromatherapy and scented oils.

In-Class Massage Practice

- ☉ Massage and Medical Conditions Students with medical conditions that make them unable to perform any or all course requirements for one day should contact their course instructor for instructions on how to participate in class. Students with medical conditions that make them unable to perform any or all course requirements for more than one day must obtain written documentation from a licensed primary care provider, and meet with the admin to outline a plan for continued class participation.
- ☉ Practice Clients Students should conduct an intake interview with all clients to determine if there are any contraindications or cautions to massage. Students should refrain from giving massages to clients who have contagious conditions or conditions that could be worsened by general circulatory massage. Students should make modifications to their massage practice sessions for individuals with conditions that have local contraindications for massage.
- ☉ Skin Infections or Lesions on Hands or Arms If a student has an infectious skin rash, a skin lesion, or an open wound of any kind on the hands or arms, they will not be allowed to massage on campus or for any assignment until skin integrity is restored.
- ☉ Skin Infections on Other Body Parts If a student has an infectious lesion or wound on body areas other than the hands and forearms, they must adequately bandage the area so no infectious secretions come into contact with the clothes or hands. They must also thoroughly wash their hands after bandaging and before and after performing a massage.
- ☉ Common medical conditions that contraindicate massage or require modifications include:
- ☉ Skin conditions local massage is contraindicated for any condition that can be spread or irritated by massage.
- ☉ For inflammatory conditions (arthritis rheumatoid arthritis muscle sprains skin inflammations) local massage is contraindicated.
- ☉ Fever General massage is contraindicated for individuals with fever.
- ☉ Swelling local massage is contraindicated for issues where the swelling is due to infection, lymphatic disease, obstruction, kidney problems, heart failure, or any other serious disorder.
- ☉ Heart conditions General massage is contraindicated for individuals with any serious heart condition without the written authorization of a physician.
- ☉ For vascular disease, local massage is contraindicated for varicose, thrombophlebitis, and deep vein thrombosis.
- ☉ Altered or limited sensation light pressure or only in areas of limited sensation.
- ☉ For upper respiratory infection general massage is contraindicated.
- ☉ Gastrointestinal conditions abdominal massage may be contraindicated.
- ☉ Diabetes or associated conditions, neuropathy, kidney disease, etc... may contraindicate for general

or local massage.

- ☉ Pregnancy Healthy pregnant women can receive great benefits from massage with minimum adjustments to the massage session. However, in the case of high-risk pregnancies, there may be additional precautions or contraindications that the therapist needs to be trained for. Therefore students are not permitted to provide massage to women whose pregnancy is categorized as high-risk students who wish to practice with pregnant women must abide by the following procedures.
- ☉ Permission Pregnant students or clients must have a written statement by a licensed physician that their pregnancy does not fall into the high-risk category and that there are no contraindications to massage due to the pregnancy.
- ☉ Positioning a second or third-trimester pregnant woman should not be placed in a prone or a supine position. The sideline position is required and can be demonstrated by your instructor extra boosters blanket interpose may be required for clients comfort.

Physical Boundaries

- ☉ Draping is the process of using sheets, towels and other linen to help a client stay warm and maintain a sense of modesty during the massage. By using effective draping techniques the massage therapist maintains a professional and ethical practice and helps the client feel safe, warm, and secure. Only the part of the body being massaged is uncovered dripping with be performed to ensure that the breasts genitals and glute class are always covered.
- ☉ Breast massage is not permitted at Transcendence School of the Healing Arts.
- ☉ Nudity in any form on campus is strictly forbidden. Nudity is defined as a state of dress that exposes any personal body parts such as breasts, genitals, or the gluteal cleft. Students providing massages on or off campus must be clothed appropriately at all times.
- ☉ Sexuality in Massage: Students are not permitted to touch say or do anything during a practice massage session that can be interpreted as sexual, sexually stimulating, sexually suggestive, or sexual in any way.

Non-Academic Policies and Procedures

- ☉ Campus policies The following campus policies are designed to foster a comfortable and professional learning environment. Students who fail to adhere to any of the school's policies may be placed on academic probation or dismissed from the school.
- ☉ Bicycles are not allowed inside the school building itself. Parking places are provided outside. Here at Transcendence, we do not take responsibility for lost or stolen bikes students are encouraged to secure the bikes with theft deterrent locks such as heavy-duty chains or kryptonite-style locks.

- ☉ Cell phones may not be used inside the classrooms; this includes texting.
- ☉ Children are not to be brought to campus and or not be was left unattended anywhere on the campus grounds.
- ☉ Food is permitted in the kitchen and lounge areas.
- ☉ Pets are not allowed inside the school.
- ☉ Smoking is not permitted in school or around the school.
- ☉ Professional conduct Transcendence School of the Healing Arts school is a professional school, as such students, faculty, and staff are expected to maintain high standards of professional conduct. Students who fail to adhere to any of these standards or professional conduct may be placed on nonacademic probation or dismissed from the school.
- ☉ Professional behavior Students are expected to demonstrate professional behavior in their interactions with faculty staff students and the general public. This professional behavior includes but is not limited to the following:
 - ☉ Respect all students, faculty, and staff are expected to respect individuals' differences, and beliefs and to maintain sensitivity to the feelings, and ideas of others on the campus. Derogatory comments, verbal abuse, or physical abuse will not be tolerated.
 - ☉ Honesty students are expected to interact with staff, faculty, classmates, and the general public with honesty. Plagiarism, cheating, giving false information on college forms, theft, or any form of dishonesty is not permitted.
 - ☉ Confidentiality Personal information revealed in any class or meeting is confidential. Additionally, client information on the student clinic is confidential.
 - ☉ Class disruption. Students are not permitted to engage in any activity that disrupts the class. This includes, but is not limited to:
 1. Talking or making other noises during presentations by the teacher or students.
 2. Using electronic devices such as cell phones or personal computers.
 3. Sleeping in class
 4. Leaving without permission
 5. Comer chick coming to or returning late to class
- 6. makes inappropriate comments or performs unacceptable actions toward other classmates.
- ☉ Sexual activity any sexual or sexually suggestive activity on campus or during off-campus assignments is not permitted.
- ☉ Harassment any kind of act or speech critical of a person's sex, race, religion, national origin, age, sexual orientation, gender identity, handicap disability condition is considered harassment. Verbal or physical conduct of a sexual nature on campus or during assignments is considered sexual harassment. Harassment including verbal or physical threats, by any member of the community, either on campus or during any activity associated with the massage course assignments, is not permitted.
- ☉ The college considers bullying to be conduct of any sort directed at another that is severe, pervasive, or persistent, and that would cause a reasonable person in the victim's position substantial emotional distress that would undermine their ability to work, study, or participate in the regular life activities or activities of the college. Bullying includes verbal or written statements, unwanted physical contact, suspicious incursions of isolation, sabotage of a person's work, and abuse of authority. Bullying may include repeated acts of a single or severe act. Bullying by any member of the community or school on campus is not permitted.
- ☉ Drugs, alcohol, weapons. Students, staff, and faculty members may not bring to campus or participate in and out of class assignments while under the influence of illegal drugs. This includes prescription drugs prescribed to another person, alcohol, or marijuana. Possession, use, or distribution of weapons, illegal drugs, alcohol, and marijuana are not permitted on campus.

- ☉ Professional Dress Code. Following accepted standards for healthcare professionals: Students are required to wear clean, neat, and professional clothing while on campus or performing out-of-class assignments. Students who fail to adhere to the professional dress code may be placed on academic non-non-academic probation or dismissed from the school.
 - ☉ Upper body. Shirts and tops must be clean, neat, modest, loose, professional in appearance and free of holes and tears. They must extend below the waist or be tucked in so that the abdomen, gluteal cleand ft, underwear are not exposed when the student is standing or leaning forward.
 - ☉ Lower body. Panknee-lengthnngth shorts, dresses or skirts, and sweatpants or similar athletic wear are permitted. I deserve to be clean, neat, modest, loose, and professional appearance and be free of holes and terrorists. They must be worn so that neither the abdomen nor the underwear are exposed.
 - ☉ Feet. Students May remove their shoes in class for activities other than clinic oh, so long as they wear socks. Otherwise, shoes are required at all times in the building. Bare feet are never permitted.
 - ☉ Accessories. Students must remove rings, bracelets, and watches during massage practice sessions. Students must also remove any other jewelry that could irritate or harm the skin of another student or client during a massage practice session.
 - ☉ Personal grooming. Students are required to maintain the following habits or personal grooming. Students who fail to adhere to these standards of personal grooming may be placed on non-academic probation or dismissed from the college.
 - ☉ Bathing. Students should bathe or shower before attending class or performing out-of-class massage assignments. Students with significant body odor or who are not hygienic will be asked to leave class and receive an absence from the class.
 - ☉ Hair care. Hair must be styled so as not to touch the client during a massage session. Students should also refrain from touching their hair during the session to maintain sanitary conditions.
 - ☉ Fragrances. Students should refrain from wearing fragrances or strong-scented body care products to minimize the possibility of allergic reactions.
- Students wearing strong performances will be asked to leave class and receive an absence.
- ☉ Smoking. The smell of smoke is pervasive: it's on your clothes, your hair, your skin, and your breath. This can be unpleasant for others and can even cause severe allergic reactions. Attempts to mask the smell of smoke with mint or essential oils are largely unsuccessful, simply adding to the smell rather than eradicating it. As a courtesy to your practice partners and others, please keep smoking to a minimum when preparing for classes or other massage sessions. Students with strong smells of smoke will be asked to leave class and will receive an absence for that class.
 - ☉ Fingernails. Fingernails must be kept clean and short to minimize the possibility of injury and disease transmission. Nail should not extend beyond the fingertips, and should have the corners filed.
 - ☉ False representation. Oregon law prohibits the practice of massage without a valid license. Students enrolled in a course given by certified massage schools are allowed to practice massage techniques that are taught in that class if they identify themselves as a student to any member of the public receiving the massage and are not compensated by money, barter, PS, or any other method.
 - ☉ Students must identify themselves as massage students. Students who represent themselves as massage therapists by using the title massage therapist body work or any other language imply that they have a license to practice massage and or receive any form of payment for giving a massage or are guilty of practicing massage without a license. Students are not permitted to advertise even if they are clear and indicate they are students. Such students are reported to the Oregon Board of Massage.
 - ☉ The board has the right to fine, censure, reprimand, and/or refuse to Grant a license to the student as a result. For further information, consult the Oregon revised statutes, chapter 687.031, and the Oregon administrative rules, chapter 334-030-0025. Both publications are available from the Oregon Board of Massage Therapists website at www.oregon.gov\OBMT.
 - ☉ Students who practice massage without a valid massage license or receive any compensation for their practice may be placed on academic probation or dismissed from the school.

- Professional Ethics. Transcendence School of the Healing Arts expects the highest standards of ethics on the part of the students and teachers. We believe in the Oregon Board of Massage Therapist standards and objectives of professional conduct Oregon administrative rule 334-030-0005. Students are required to adhere to these standards while on campus, performing any out-of-class assignments, or when representing themselves as a Transcendence Massage School student in any other way. Students who fail to adhere to any of the professional standards of ethics may be placed on non-academic probation or dismissed from the school.

Standards and Objectives of Professional Conduct from OAR

- 334-030-0005 (1) standard I: Responsibility. The relationship between LMT and the profession. LMT must: (a) Acquire, maintain, and improve professional knowledge and competence using scientific, clinical, technical, psychosocial, and governmental sources of information; (b) Act within the context of professional practice standards, codes of ethics, and relevant statutes and regulations; (c) Consider factors related to safety, effectiveness, cost of planning and providing care and services; (d) represent all aspects of his or her professional capabilities and services honestly and accurately; (e) Be accountable to his or her profession for establishing the quality and effectiveness of care and services, using their experience, professional education, and available resources; (f) Establish relationships with other massages, bodywork or healthcare professionals to collaborate with and to offer or receive consultation in the provision of services; and (g) Be accountable for his or her actions and commitments and assume personal and professional responsibility to do his or her best.
- (2) Standard II: Therapeutic Relationship. The relationship between the LMT and the client. The LMT must: (a) Be accountable to his or her clients for the quality and effectiveness of care and services and for creating the basic conditions and boundaries necessary to foster safety and trust in the client- professional relationship; (b) Plan and provide care and services to the best of his or her abilities, in partnership with the client, based on clients needs; (c) ensures that their actions with a client are based upon understanding and implementing the core values of caring, respect, compassion, appropriate boundaries, and appropriate use of personal power; (d) Develop alliances with the client, colleagues, other health care providers and the community to provide care and services that are safe, effective and appropriate to the client's needs; (e) Develop and incorporate respect for diverse client backgrounds in regard to a client's clinical diagnosis, lifestyle, sexual orientation, race, gender, ethnicity, religion, age, and socioeconomic background when planning and providing services; (f) act as an advocate for a client and clients needs; (g) support and respect the clients right and responsibilities for self-determination and making healthcare choices; and (h) face decisions and actions on behalf of a client on sound ethical reasoning and current principles of practice.
- Standard III: Critical Reflection. The relationship of LMT to self. The LMT must: (a) Use critical reflection in the assessment of professional and clinical situations for the development and provision of care and services; (b) evaluate the quality and effectiveness of his or her professional practice activities; (c) Modify and adapt professional practice activities, consistent with current professional standards and practices, in response to client needs, advancing knowledge and research, and social expectations; and (d) Be an autonomous agent in planning and providing care and services to individuals, groups and the community.
- Conflict resolution. Here at Transcendence School of the Healing Arts, we encourage students, teachers, and staff members to manage conflict by meeting together in a spirit of cooperation, with the intent of resolving the issue.
- Sexual harassment policy. Sexual harassment is not tolerated at Transcendence School of the Healing Arts. sexual harassment is defined as any unwelcome sexual advances, requests for sexual favors, and or verbal, visual or physical conduct of a sexual nature. Violations of the sexual harassment policy May results in disciplinary action and may include dismissal from the school. Any student who believes this policy has been violated should report the problem directly to the head of the school.
- Security policies have been developed and implemented to ensure a reasonably safe campus environment. Copies of these policies are available upon request.

Additional Qualifications

These academic and technical qualifications assist you in progressing through the curriculum and clinical training in a massage therapy program. All students must meet both our academic standards and our technical standards in order to be admitted, progress through, and graduate from the Massage Therapy program.

Attendance/ Participation	10%
Quizzes	10%
Homework (Logs, etc.)	10%
Midterm Practical	15%
Midterm Written	15%
Final Practical	20%
Final Written	20%
Total	100%

Academic Standards

Academic standards refer to acceptable demonstrations of competency in various disciplines, before admission and after, as judged by faculty members, examinations, and other measurements of performance. Refer to the Transcendence School of the Healing Arts Student Handbook for detailed information about academic standards.

Grading:

All massage courses must be completed with a C or better to earn credit for the course.

All massage courses must be passed to apply for your license with the Oregon Board of Massage Therapy.

Grade Scale:

94%-100%	A
90%-93%	A-
87%-89%	B+
84%-86%	B
80%-83%	B-
77%-79%	C+
74%-76%	C
70%-73%	C-
67%-69%	D+
64%-66%	D
60%-63%	D-
59% or below.	F

Quizzes:

Quizzes will be given at the beginning of class within the first 20 minutes. If you are tardy then you will have the remaining time to finish your quiz and no 'extra' time will be given. Quizzes may either be written or oral which are composed of questions relating to material covered in previous classes. Quizzes will be no more than 50 questions composed of True/False, Multiple Choice, Matching, Short Answer, or a practical demonstration.

Homework / Oral Presentation:

Homework is a compilation of Log hours (Giving and Receiving Massages), written papers, and other various assignments. The Oral Presentation(s) will be conducted in front of the Instructor and the class. The presentation will either be a series of questions asked by the Instructor or a demonstration of knowledge or skill by the student. Specific instruction on what is to be expected will be given in class by your instructor.

Midterm Exams:

There will be Practical and Written Midterm exams. The Practical Midterm exam will be a demonstration of strokes, basic technique and massage sequence. The Written Midterm exam will be no more than 100 questions composed of True/False, Multiple Choice, Matching, and Short Answer.

Final Exams:

There will be Practical and Written Final exams. The Practical Final exam will be a demonstration of strokes and basic technique as well as sequence work. The Written Final exam will be no more than 200 questions composed of True/False, Multiple Choice, Matching, and Short Answer.

Satisfactory Academic Progress Policy

- ☉ Director routinely checks all enrolled students to ensure that at least a 70% average is maintained.
- ☉ An audit is performed after each class to ensure student's attendance complies with attendance policy.
- ☉ Students that are not academically progressing or fails to adhere to attendance policy, will
- ☉ be placed on Probation.
- ☉ Director will resume routine audits for any student that returns to class
- ☉ from Probation.
- ☉ Director will review all folders every 100 hours to monitor grades and attendance.
- ☉ Students that fail to meet Satisfactory Academic Progress Policy will need to reapply to the school for consideration.

Attendance:

Success in this course is dependent on your active participation and engagement throughout the course. As such, students are required to

- a. to actively participate in class discussions/lectures at the assigned times
- b. complete all pre-session assignments by the due date.

For each class session, students will receive contact hours for class attendance and participation. You will not receive any contact hours if you do not attend. Any hours not accumulated during the class session, will be required to be made up according to the school's make-up policy.

Class participation grade has the following components:

- ☉ Attendance is mandatory, all missed time, must be made up to earn credit for the course.

Tardiness, Absences, and Make-up Work

If a student is more than 15 minutes late for class, the time must be made up. Three tardies result in one hour of make-up work. Attendance will be recorded in each class. Students must attend a minimum of 100% of the total clock hours through scheduled attendance and make-up sessions. Students must attend the scheduled hours specific to the Massage Therapy Program. We require that students make up hours missed, weather permitted or unpermitted. Make up work will be accessed on a case-by-case basis and will consist of take home assignments or additional hours.

Class participation grade has the following components:

Attendance is mandatory, all missed time, must be made up to earn credit for the course.

1. Excused Absences:
 - ☉ Definition: Absences that are pre-approved or justified due to legitimate reasons, such as illness or family emergencies.
 - ☉ Examples: Medical appointments, illnesses, and family emergencies may be considered excused absences.
 - ☉ Impact: Excused absences do not typically result in academic penalties or a negative impact on a student's overall attendance record, but they are still counted towards the overall attendance requirement.
2. Unexcused Absences:
 - ☉ Definition: Absences that are not pre-approved or justified and do not fall under the category of excused absences.
 - ☉ Examples: Absences for personal reasons, such as forgetting to attend a class, or absences without providing adequate documentation or explanation.
 - ☉ Impact: Unexcused absences can negatively impact a student's attendance record and can lead to academic penalties, such as failing a course if attendance requirements are not met.
3. Satisfactory Attendance Progress:
 - ☉ Requirements: Massage therapy programs in Oregon generally require students to attend a certain percentage of scheduled hours (e.g., 90%) to be considered making satisfactory attendance progress.
 - ☉ Consequences of Unsatisfactory Progress: If a student misses more than the allowed percentage of scheduled hours (e.g., 10% for excused absences), they may be required to make up the missed hours, or they may face academic consequences, such as failing a course.

Make-Up Policies: Tardiness, Absences, and Make-up Work

If a student is more than 15 minutes late for class, the time must be made up. Three tardies result in one hour of make-up work. Attendance will be recorded in each class. Students must attend a minimum of 100% of the total clock hours through scheduled attendance and make-up sessions. Students must attend the scheduled hours specific to the Massage Therapy Program. We require that students make up hours missed, weather permitted or unpermitted. Make up work will be accessed on a case-by-case basis and will consist of take home assignments or additional hours.

In Oregon massage therapy schools, excused absences are generally allowed for a specific number of hours, while unexcused absences can impact a student's ability to complete the required course work and progress toward graduation. Generally, attendance requirements for massage therapy programs in Oregon are high, often requiring at least 90% attendance.

Grade Implications: Failing to meet the minimum attendance requirement can result in a failing grade for the course.

- ☉ Important Considerations: Documentation: Students should document excused absences and provide appropriate documentation to the school.
- ☉ Communication: Students should communicate with their instructors or the school administration regarding absences as soon as possible.
- ☉ Individual School Policies: Specific attendance policies may vary from school to school, so it is important to review the school's student handbook or policies for detailed information.
- ☉ Leave of absence: These will be determined on an individual basis and will depend on the situation.

Verbal and Written Warning System for Misbehavior in Massage Schools Students in Oregon

1. Verbal Warnings:

- ☉ Initial Step: A verbal warning is often the first step in addressing minor student misconduct. It's a way to formally notify the student that their behavior is problematic and needs to be corrected.
- ☉ Purpose: The goal is to educate the student about the specific issue, remind them of expectations, and give them an opportunity to improve their conduct.
- ☉ Documentation: While verbal, the incident is likely documented by the school for future reference.

2. Written Warnings:

- ☉ Formal Notice: A written warning signifies a more formal and serious disciplinary action.
- ☉ Documentation and Consequences: It provides written notice of the violation, details the specific misconduct, references relevant policies, and outlines the consequences of future violations.
- ☉ Escalated Action: It may be used after a verbal warning has been ineffective or for more serious initial offenses.
- ☉ Record: Written warnings become part of the student's disciplinary record.

3. Potential Causes for Warnings:

- ☉ Violations of Client Rights: These are especially important in a massage therapy setting and include things like failing to protect client privacy or confidentiality, or engaging in inappropriate conduct. This includes discrimination.
- ☉ Unprofessional Conduct: This encompasses various behaviors, such as sexual misconduct, inappropriate interactions with clients, or failing to maintain ethical standards.
- ☉ Attendance Issues: Massage schools often have specific attendance requirements, and excessive absences can lead to warnings.
- ☉ Academic Dishonesty: Cheating, plagiarism, or falsifying information can result in disciplinary action, including warnings.
- ☉ Failure to Cooperate with the Board: This includes not providing information requested by the Oregon Board of Massage Therapists during investigations.
- ☉ Safety and Sanitation Issues: Failing to maintain a clean and sanitary environment in the massage establishment can be a cause for disciplinary action.

4. Progressive Discipline: This begins with less severe sanctions like warnings and escalates to more

serious consequences like suspension or expulsion if the behavior continues or is particularly egregious. Transcendence School of the Healing Arts believes in the 3 strikes your out rule. A student's third infraction will result in expulsion.

Probation

Probation: The second warning will land a student on probation. They will remain on probation until the end of the school term. Any further problem will result in expulsion.

- ☉ A massage school student on probation may still be considered to be making satisfactory progress, but with some limitations. Probation status generally means the student has been given a second chance to meet the requirements that the student has failed in meeting.
- ☉ Students failure to meet academic requirements, like completing a specific percentage of courses with a certain grade or GPA, may effect their eligibility for financial aid.

Here's a more detailed breakdown:

- ☉ Probation Status: This signifies that a student's satisfactory progress has been temporarily interrupted, but they have been granted a chance to improve.
- ☉ Impact on Financial Aid: Transcendence School of the Healing Arts allows students on probation to continue receiving financial aid, but they must meet the terms of their probation to avoid losing it.
- ☉ Academic Requirements: Students on probation will often have a specific academic plan outlined for them, including a required GPA, completion rate, or other academic achievements.
- ☉ Potential for Suspension/Expulsion: If a student fails to meet the requirements of their probation, they will be suspended/expelled from the program. Student's that are suspended/expelled may reenter the program during the next term if approved by the Director of the school.
- ☉ Eligibility for Future Enrollment: A hold on future enrollment will be placed upon a student until they meet with a counselor to discuss their academic standing. A student that wants to reenter the program must complete a plan to ensure they don't experience the same problem again.

Students that exit the program voluntary may reenter during the next school term if they want to.

Discrimination

Transcendence School of the Healing Arts prohibits discrimination against its customers, employees, and applicants for employment and student applications on the basis of race, color, national origin, age, disability, sex, gender identity, religion, reprisal, political beliefs, marital status, familial or parental status, sexual orientation, or if all or part of an individual's income is derived from any public assistance program, or protected genetic information in employment or in any program or activity conducted or funded by Transcendence School of the Healing Arts.

Any person unlawfully discriminated against, as described in ORS 345.240, may file a complaint under ORS 659A.820 with the Commissioner of the Bureau of Labor and Industries.

All school's policies governing employees will be enforced in situations where instructional staff or other school personnel have been found to have engaged in discriminatory behavior

Students aggrieved by action of the school should attempt to resolve these problems with appropriate school officials. Should this procedure fail students may contact: Higher Education Coordinating Commission, Private Career Schools, 3225 25th St. SE, Salem OR 97302". After consultation with appropriate Commission staff and if the complaint alleges a violation of Oregon Revised Statutes 345.010 to 345.470 or standards of the Oregon Administrative Rules 715-045-0001 through 715-045-0210, the Commission will begin the complaint investigation process as defined in OAR 715-045-0023 Appeals and Complaints.

Technical Standards

A student must possess the following abilities, with or without reasonable accommodation, for completion of the professional certificate and degree programs in massage therapy:

- Ability to apply massage and adjunctive techniques over the full range of a client's body, including positioning clients, palpating, feeling with hands and fingers, pushing, pulling, kneading, grasping, twisting wrists and lifting up to 10 pounds, for periods of up to 90 minutes standing without interruption.
- Ability to determine depth and intensity of manual pressure and force, as applied in the performance of common massage and adjunctive procedures and techniques.
- With or without reasonable accommodation, ability to receive and record client histories, document treatment plans, provide instructions to clients and provide routine client safety services.
- Ability to perform in all laboratory and clinical settings without posing a threat to themselves, to the safety and well-being of fellow students or clients.
- Ability and willingness to receive massage and adjunctive treatment. Much of the technical instruction in the programs requires reciprocal application of the techniques of massage therapy, including trigger point therapy and cross fiber friction. In reciprocal laboratory experiences, receiving techniques is necessary to learn proper procedures and to receive and provide learning feedback. Reciprocal application of technique is also useful for developing sensitivity to client needs. Transcendence may temporarily excuse a student from receiving massage therapy provided that there is a specific medical contraindication, as determined in writing by a licensed healthcare professional.
- Navigate various learning spaces (in person, online, hybrid, hybrid, hybrid) successfully including the use of any associated technology and applications (computer, learning management system, email, etc.).

All students, with or without reasonable accommodation, must carry out laboratory and clinical assignments, including providing massage therapy services to clients. Qualified persons with disabilities, with or without reasonable accommodation, must be able to pass oral, written and practical examinations and meet all of the clinical requirements of Transcendence.

It is in the best interests of both the student and

Transcendence to assess the degree of limitation caused by disability. However, Transcendence will make the final determination of whether or not an individual meets all qualifications for study at the school.

Note to applicant: Admission is competitive and enrollment is limited. Satisfying the minimum requirements does not guarantee admission. Transfer students from other massage therapy programs who meet Transcendence admission requirements can be accommodated.

Transfer and prerequisite approval: Approval of transfer or prerequisite course work for one academic program does not guarantee transfer or prerequisite approval of the same courses for another program.

Progress Reports

Progress reports, often in the form of case reports, are used in massage therapy schools to evaluate student progress and track their development in practical skills and knowledge. These reports document individual student cases, including assessments, interventions, and outcomes, allowing for the evaluation of student learning and the identification of areas for improvement. Students' progress reports will be reviewed with the head of the school once a month. This will be in person.

- Student Evaluation: Progress reports, particularly case reports, provide a comprehensive record of a student's work with individual clients, allowing instructors to assess their skills and knowledge.
- Skill Development: By analyzing case reports, instructors can identify strengths and weaknesses in a student's approach to massage therapy, guiding them towards further development of specific techniques or treatment protocols.
- Knowledge Acquisition: Progress reports also demonstrate a student's understanding of anatomy, physiology, and other theoretical concepts, as they are applied to real-world scenarios.
- Feedback and Improvement: Case reports allow for constructive feedback from instructors and peers, fostering a culture of continuous improvement within the program.
- Research and Evidence-Based Practice: Case reports contribute to the body of knowledge in massage therapy, providing insights into specific cases and treatment outcomes, and potentially leading to further research.
- Professional Development: Sharing case reports with the wider massage therapy community can contribute to professional development and the advancement of the field.

Satisfactory Academic Progress Policy

- ☉ Director routinely checks all enrolled students to ensure that at least a 70% average is maintained.
- ☉ An audit is performed after each class to ensure student's attendance complies with attendance policy.
- ☉ Students that are not academically progressing or fails to adhere to attendance policy, will be placed on Probation.
- ☉ Director will resume routine audits for any student that returns to class from Probation.
- ☉ Students that fail to meet Satisfactory Academic Progress Policy will need to reapply to the school for consideration.

Right to Challenge

Massage therapy students can challenge information in their progress reports if they believe it is inaccurate, misleading, or violates their privacy. They have a right to a hearing to address these concerns with school officials. Here's a more detailed look at the process:

Initiating a Challenge:

1. Meet with School Officials: Students can initiate the challenge by meeting with school officials to discuss the specific concerns they have with the progress report.
2. Request a Hearing: If a resolution cannot be reached through initial discussions, students can formally request a hearing to challenge the information.
3. Provide Evidence: During the hearing, students have the opportunity to present evidence and arguments to support their claim that the information is inaccurate, misleading, or violates their privacy.

Hearing Process:

1. Review of Information: The hearing will involve a review of the progress report and any supporting documentation.
2. Opportunity to Respond: School officials

will have an opportunity to respond to the student's arguments and present their perspective.

3. Decision: A decision will be made regarding whether the information should be amended or removed from the progress report.
- ☉ Additional Notes: OAR 581-021-0310: This specific Oregon Administrative Rule outlines the student's right to a hearing and the process for challenging educational records.

Effects of Incompletes, Remedial Courses and Course Repetition.

In Oregon, course incompletes and remedial courses generally have no effect on a student's satisfactory progress in their massage program, while course repetitions can impact it. An incomplete grade should not be used as a substitute for poor academic performance and is not considered a passing grade.

- ☉ Incompletes: An incomplete grade, which is granted when a student has not completed all coursework due to extenuating circumstances, is not typically counted against a student's satisfactory progress. The school has policies in place for handling incomplete grades by allowing a student a set amount of time to complete the work.
- ☉ Remedial Courses: Remedial courses, which are designed to help students catch up on specific skills or knowledge, are typically not counted towards a student's satisfactory progress. The focus is on the student's ability to complete the core coursework of their program, not the remedial courses they may be required to take.
- ☉ Course Repetitions: Repeated courses, especially if the student has previously earned a passing grade in the course, can potentially impact a student's satisfactory progress. Some schools or programs may have policies in place that restrict the number of times a student can repeat a course, and may calculate the student's average grade based on multiple attempts of the same course. Transcendence School of the Healing Arts does not have limits on the number of times a student can repeat a course.

Student Records/Academic Transcripts

Academic transcripts are prepared at the scheduled completion dates of each evaluation period when grades and academic progress are formally reviewed. In accordance with the Family Educational Rights and Privacy Act of 1974, student records are only open for inspection to students and parents/guardians of dependent students to review and challenge any and all parts of said records. This inspection is welcome by appointment during regular hours of operation.

Transcendence School of the Healing Arts, LLC, maintains Student Records for all students enrolled. Student Records include enrollment data, tuition/fees payment records, attendance, progress, awards, and placement assistance information. These records will be maintained for at least three (3) years following graduation. Academic Transcripts will be retained in perpetuity. Should students desire an official copy of their academic transcript, a written request should be provided to the Director for processing. There is no charge for the initial request. There will be a \$3.00 fee for each request thereafter.

Students have the right to access and review their education records, including transcripts and other documents maintained by the school. This right is protected by FERPA (Family Educational Rights and Privacy Act). To access their records, students typically need to submit a written request to the school, and the school has 45 calendar days to comply with the request.

Rights of Students under FERPA:

- ☉ Right to Inspect and Review Records: Students have the right to inspect and review their education records within a reasonable time, but not more than 45 calendar days after the request.
- ☉ Right to Amend Records: Students can request that the school amend their records if they believe the information is inaccurate, misleading, or violates a student's rights.
- ☉ Right to Control Disclosure: Students can control who has access to their education records, including their parents, without their written consent.

Procedure for Accessing Student Records:

1. Submit a Written Request: Students should submit a written request to the school, outlining the specific records they want to review.
2. School Response: The school has 45 calendar days to provide access to the requested records.
3. Review Records: Students can review their records in person or through alternative arrangements if necessary.
4. Request for Amendment: If students find errors, they can request that the school amend the records.
5. Hearing: If the school denies a request for amendment, students have the right to a hearing.

Limitations:

- ☉ Financial Information: Financial records and statements of parents are not subject to review.
- ☉ Confidential Letters: Confidential letters of recommendation may not be subject to review if they were solicited with a written assurance of confidentiality.
- ☉ Other Student Information: Students can only review the portion of their records that pertains to them if information about other students is also included.

Certification Upon Graduation

Upon graduating from a massage therapy program in Oregon, you'll receive a certificate of completion or diploma. This credential indicates that you have successfully completed the required hours and coursework to meet the education requirements for a massage therapist license in Oregon. It signifies your readiness to sit for the licensing exams and practice massage therapy legally. To qualify to become a Licensed Massage Therapist in the State of Oregon, an applicant must:

- ☉ Meet specific education requirements listed below, and Pass the Oregon Jurisprudence (law) exam, and Have passed a Board approved written National Examination. (MBLEX, NCBTMB, CESI). *NOTE: ALL NATIONAL EXAM RESULTS MUST COME DIRECTLY FROM THE EXAM PROVIDER.
- ☉ The Board requires 625 hours/25 quarter credits/15.74 semester credits of education from an accredited or Department of Education approved school with the following:

The 625 hours/25 quarter credits/15.74 semester credits of education must include:

- ☉ A minimum of 200 hours/8 quarter credits/5.34 semester credits of health sciences, consisting of Anatomy and Physiology, Pathology, and Kinesiology; and
- ☉ A minimum of 300 hours/12 quarter credits/8 semester credits of Massage Theory and Practical Application, Clinical Practice, Business Development, Sanitation, Communication, and Ethics.
- ☉ The remaining 125 hours/5 quarter credits /2.4 semester credits required may be in any of the above subject areas

Student Additional Supplies & Expenses

AT STUDENT EXPENSE:

- ☉ Student Liability Insurance
- ☉ Licensing Test
- ☉ Licensing
- ☉ Comfortable shirt and pants
- ☉ Licensing Application
- ☉ Comfortable, clean sneakers or shoes
- ☉ Background Check
- ☉ CPR certification for state
- ☉ Passed Physical by physician
- ☉ 1 set sheets/1 twin fitted / 1 twin top sheet
- ☉ 1-2 towels
- ☉ Note taking materials Pens / pencils

Transcendence School of the Healing Arts Affiliations

We are currently partnered with Hand and Stone. Students will be given the option of doing their internship at Hand and Stone. Students will also be given an option of to pick a place that they would like to inter at. Student will inform Jeserae Baisch of their preference and he will reach out to check on the company's ability to conduct a internship.



ARTISTS TRANSCENDENCE & CHOICE OF THE HEALING